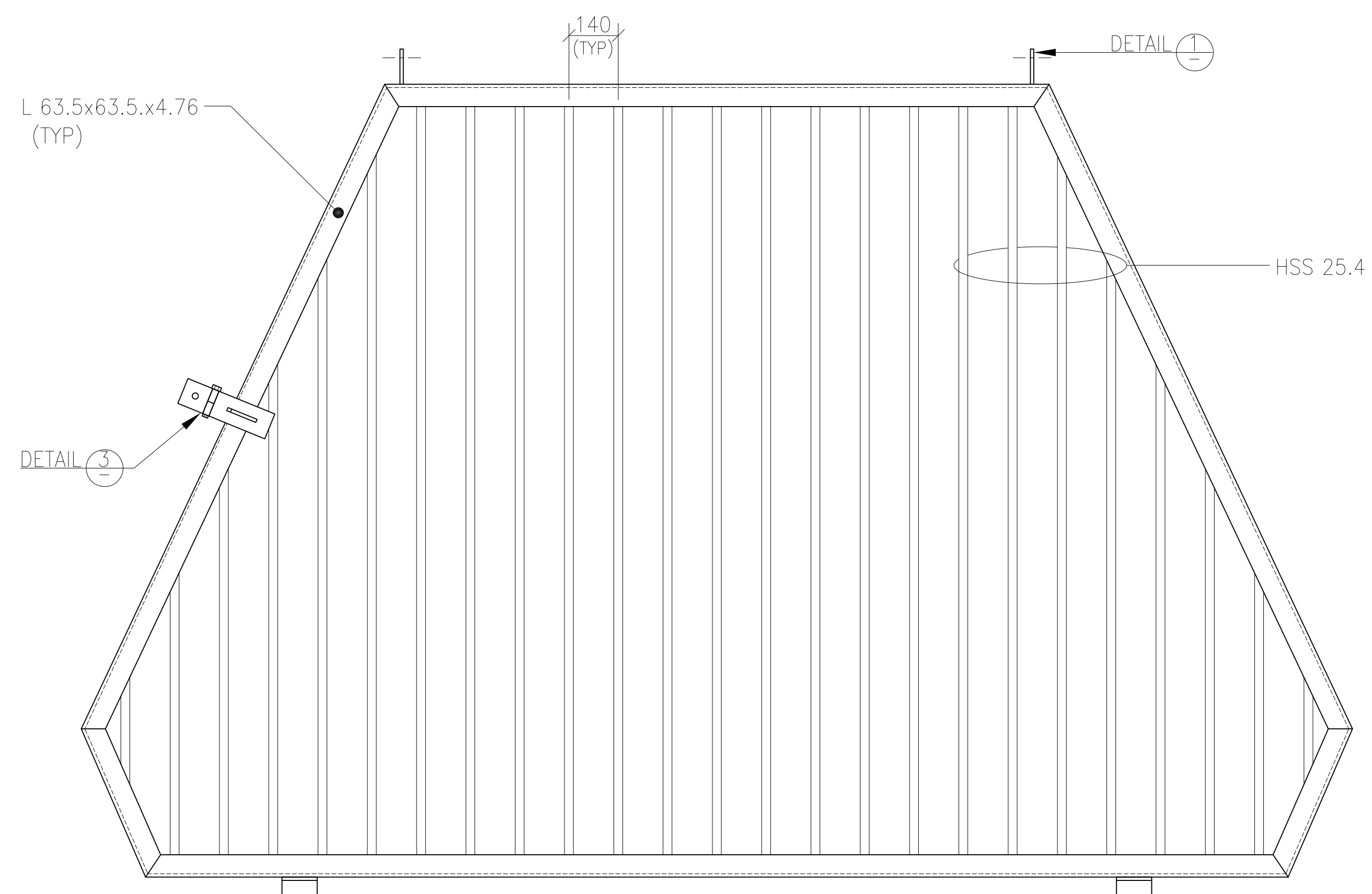
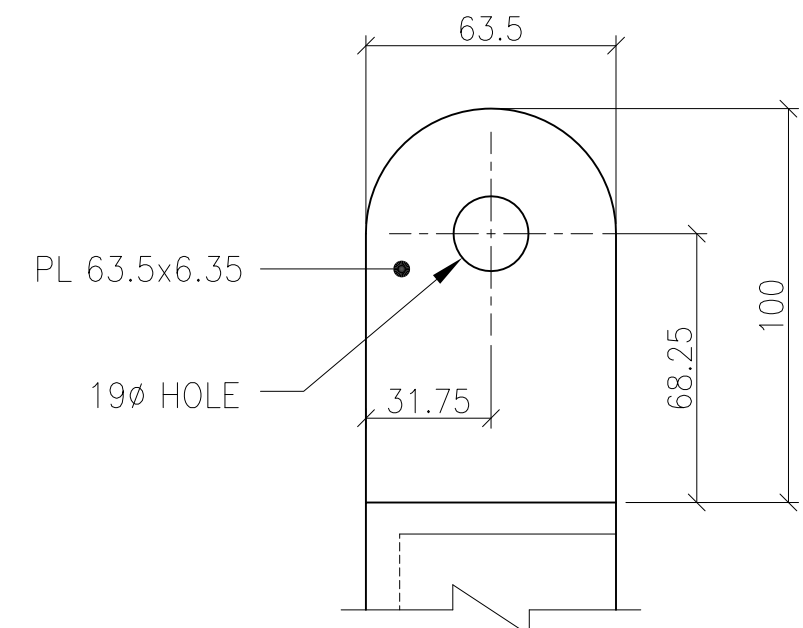


ELEVATION-OUTLET GRATE

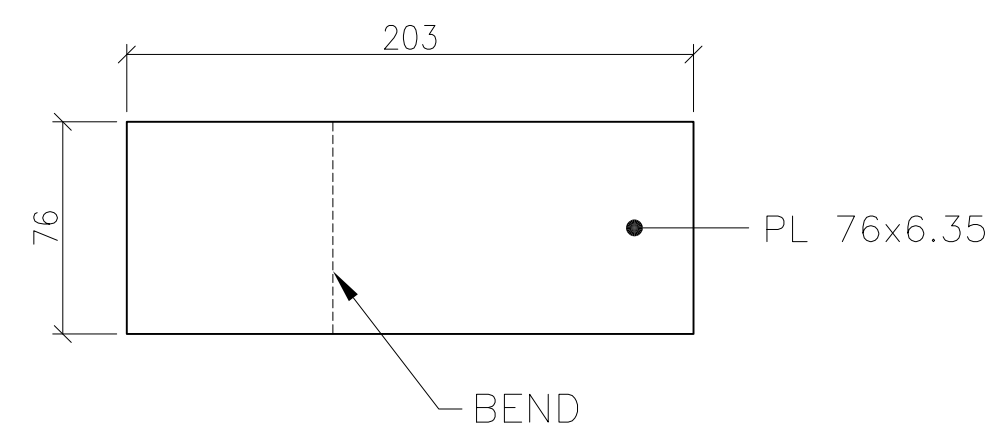
FRAME DIMENSIONS ARE TYPICAL FOR OUTLET AND INLET GRATES



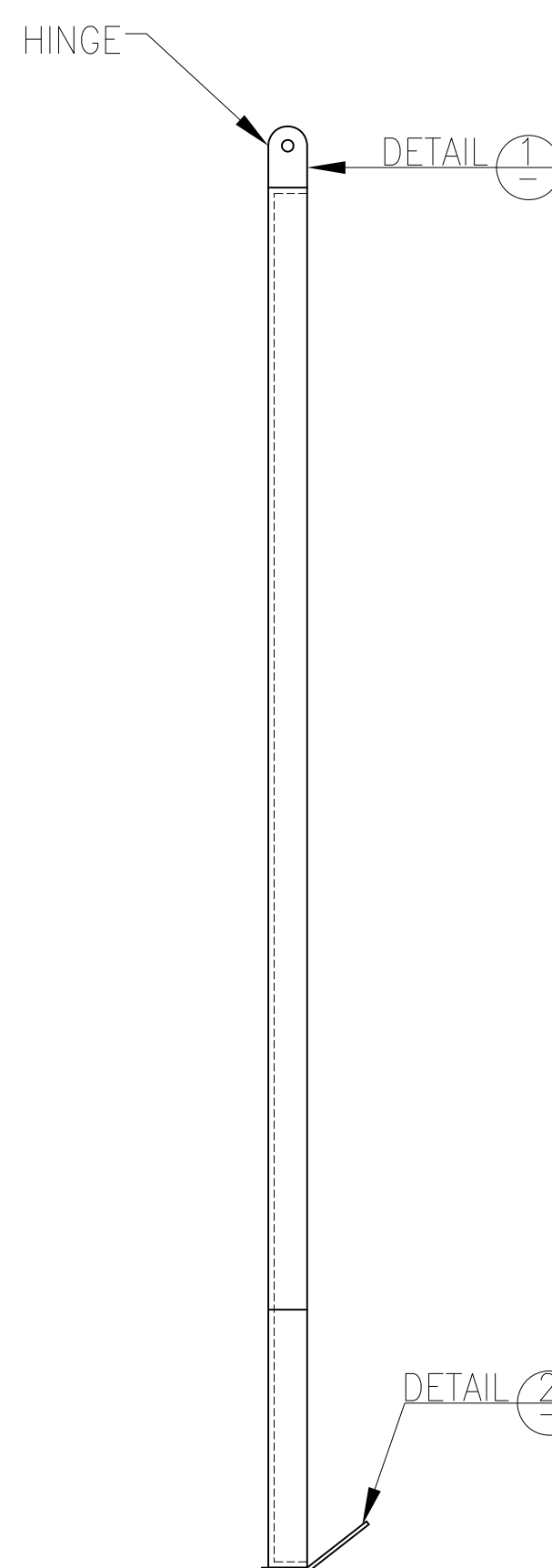
ELEVATION-INLET GRATE



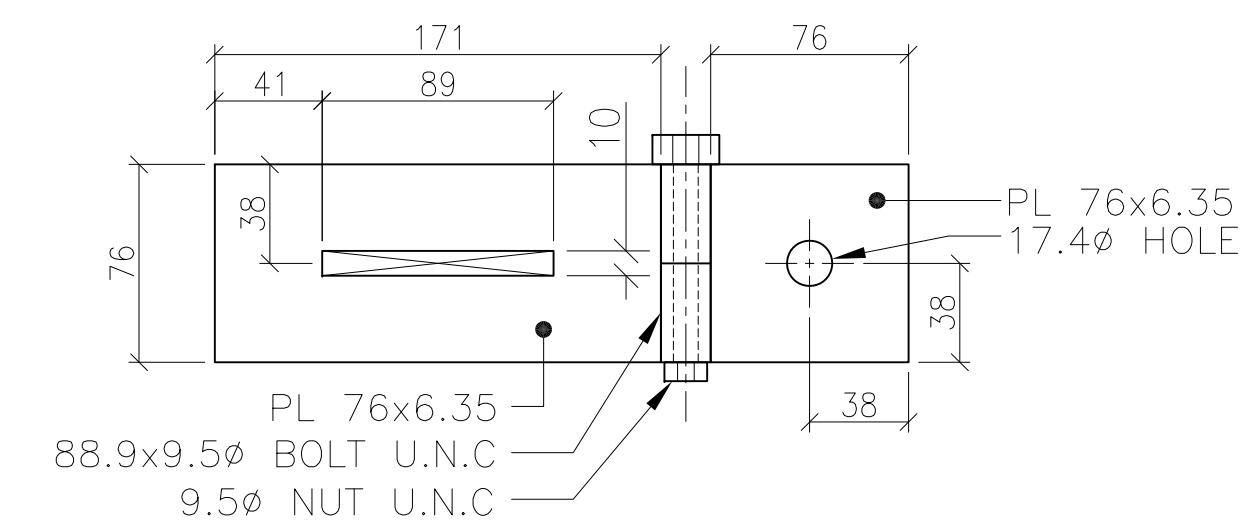
DETAIL 1 HINGE ANCHOR PLATE



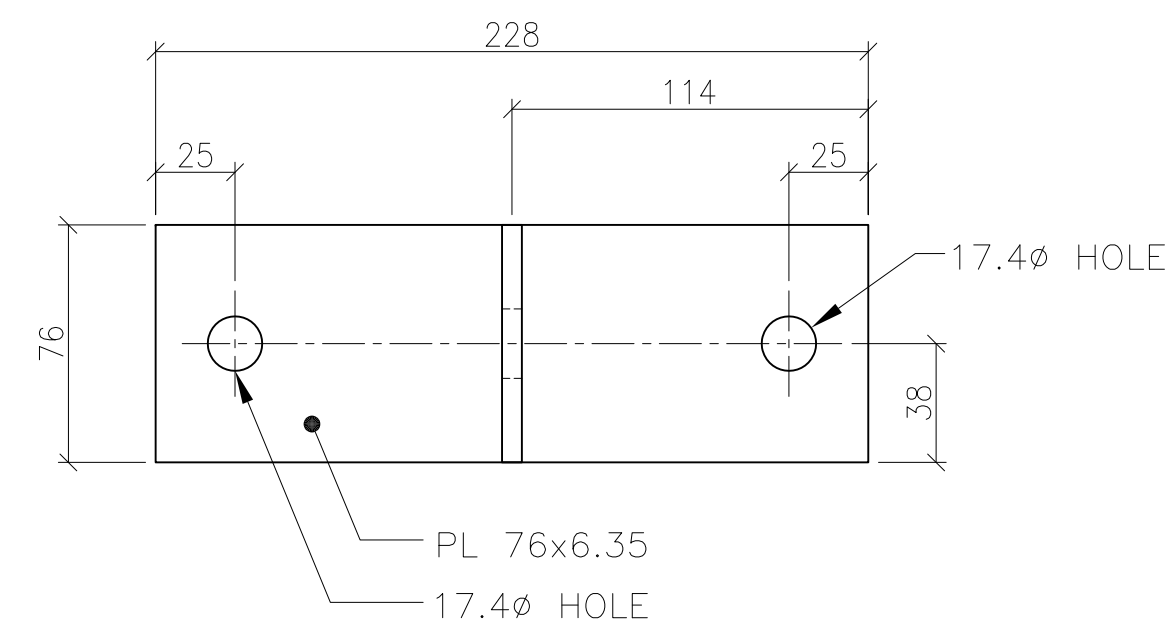
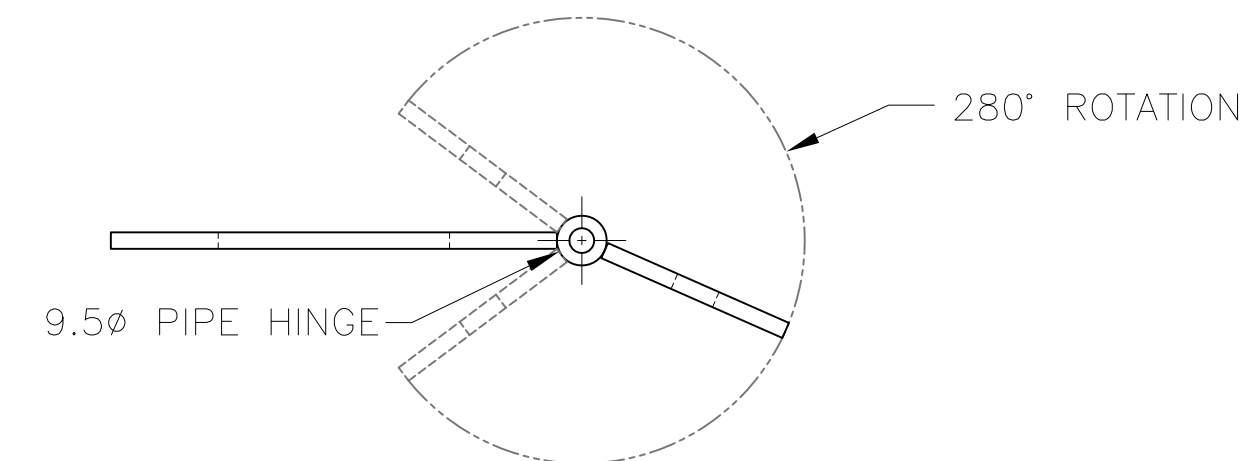
DETAIL 2 GRATE FOOT



SIDE VIEW-TYPICAL GRATE



DETAIL 3 LOCK HASP



DETAIL 4 WALL ANCHOR PLATE

CONSTRUCTION NOTES:

1. ALL GRATE STEEL COMPONENTS TO BE GALVANIZED.
2. CUT OR DRILL HOLES IN GRATE FOR GALVANIZING AS REQUIRED.
3. ALL CONNECTIONS TO BE 3mm FILLET WELD.

SHAW SUPPLIED ITEMS

3	STAINLESS STEEL "L" BRACKETS
5	9.53Ømm (3/8") STEEL WEDGE ANCHORS

NOTES

REV. NO.	REVISION	DATE
----------	----------	------



DRAWING No: **STD-HWG1900**

PROJECT TITLE: **STANDARD PRODUCTS**

PRODUCT CODE: **INLET-HWG1900V
OUTLET-HWG1900H**

DRAWING TITLE: **HRM STYLE HEADWALL
1900x1900 GRATES**

DATE: MAY 2012	DESIGNED: STAFF
DRAWN: M. CAMERON	CHECKED: STAFF