

NOTES

GENERAL

1. FOR HANDLING, STORAGE, TRANSPORTATION AND ERECTION PROCEDURES PLEASE REFER TO "DAYTON/RICHMOND GUIDELINES FOR HANDLING CONCRETE PIPE AND UTILITY PRODUCTS".

2. APPROXIMATE WEIGHT OF 2438mm = 1250 kg.

3. TOLERANCE FOR STRUCTURAL ELEMENTS, MATERIALS & CONSTRUCTION CONFORM TO CAN/CSA A23.4 "PRECAST CONCRETE" CLAUSE 10.

REINFORCEMENT

1. ALL REINFORCING STEEL SHALL BE GRADE 400W AND CONFORM TO CAN/CSA G30.18 (LATEST EDITION).

2. ALL WELDED WIRE MESH SHALL HAVE A $F_y = 485$ MPA AND CONFORM TO ASTM A496 AND A497.

3. ALL REINFORCING SHALL BE DETAILED, FABRICATED, PLACED AND SUPPORTED IN ACCORDANCE WITH CAN/CSA A23.4 (LATEST EDITION).

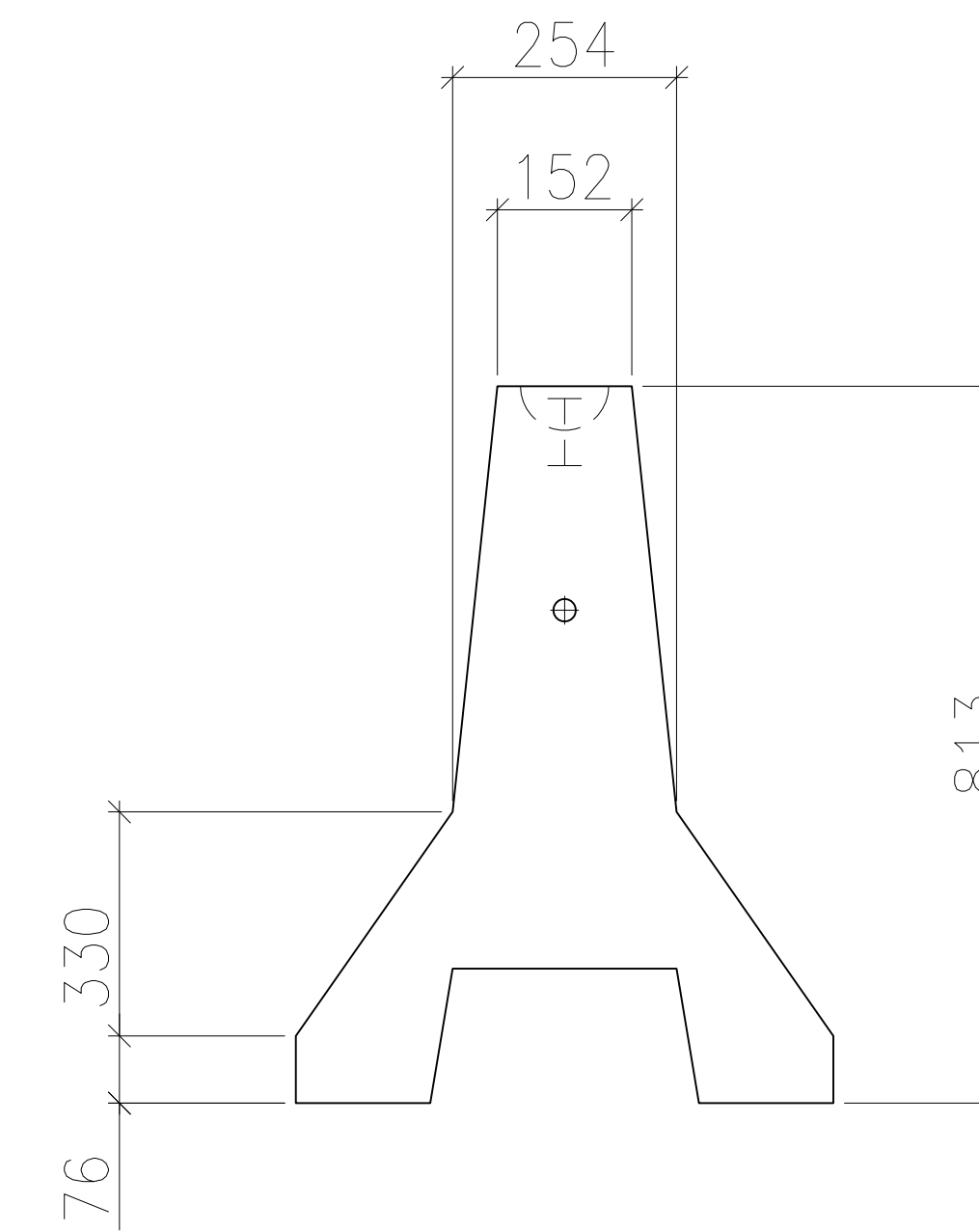
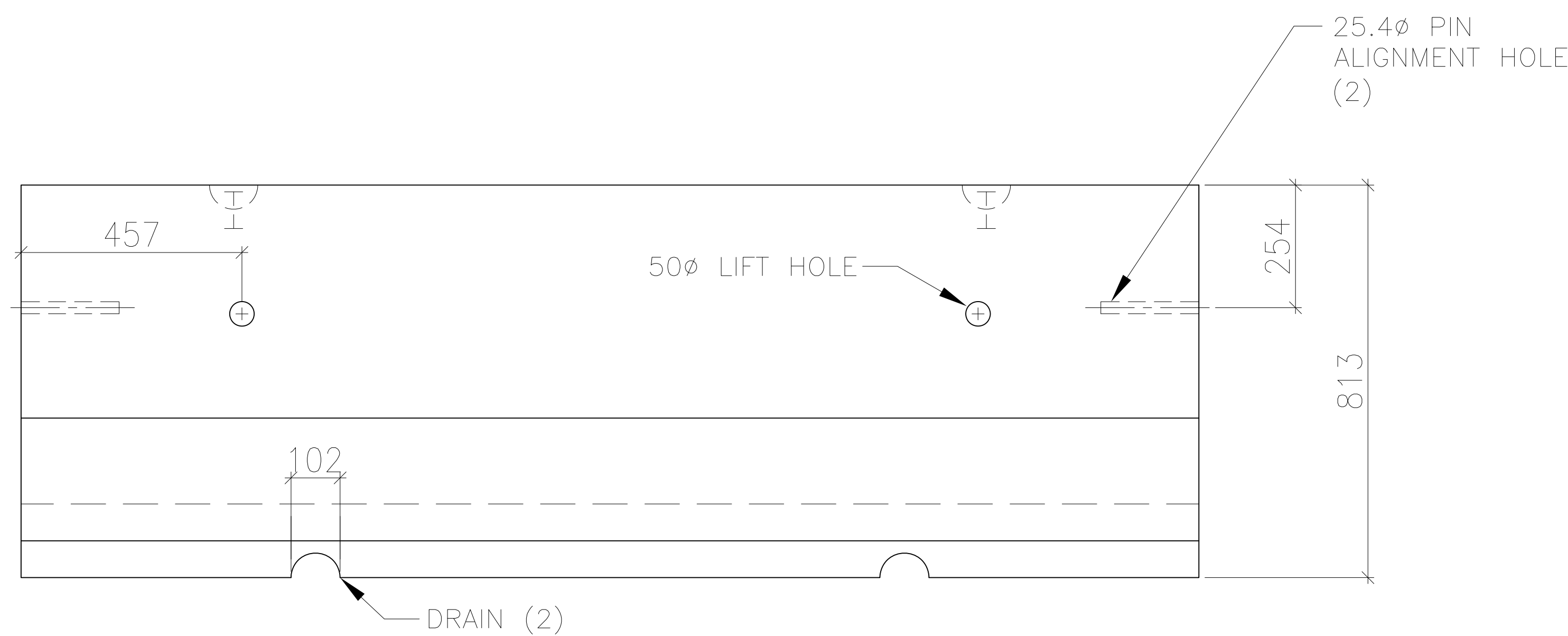
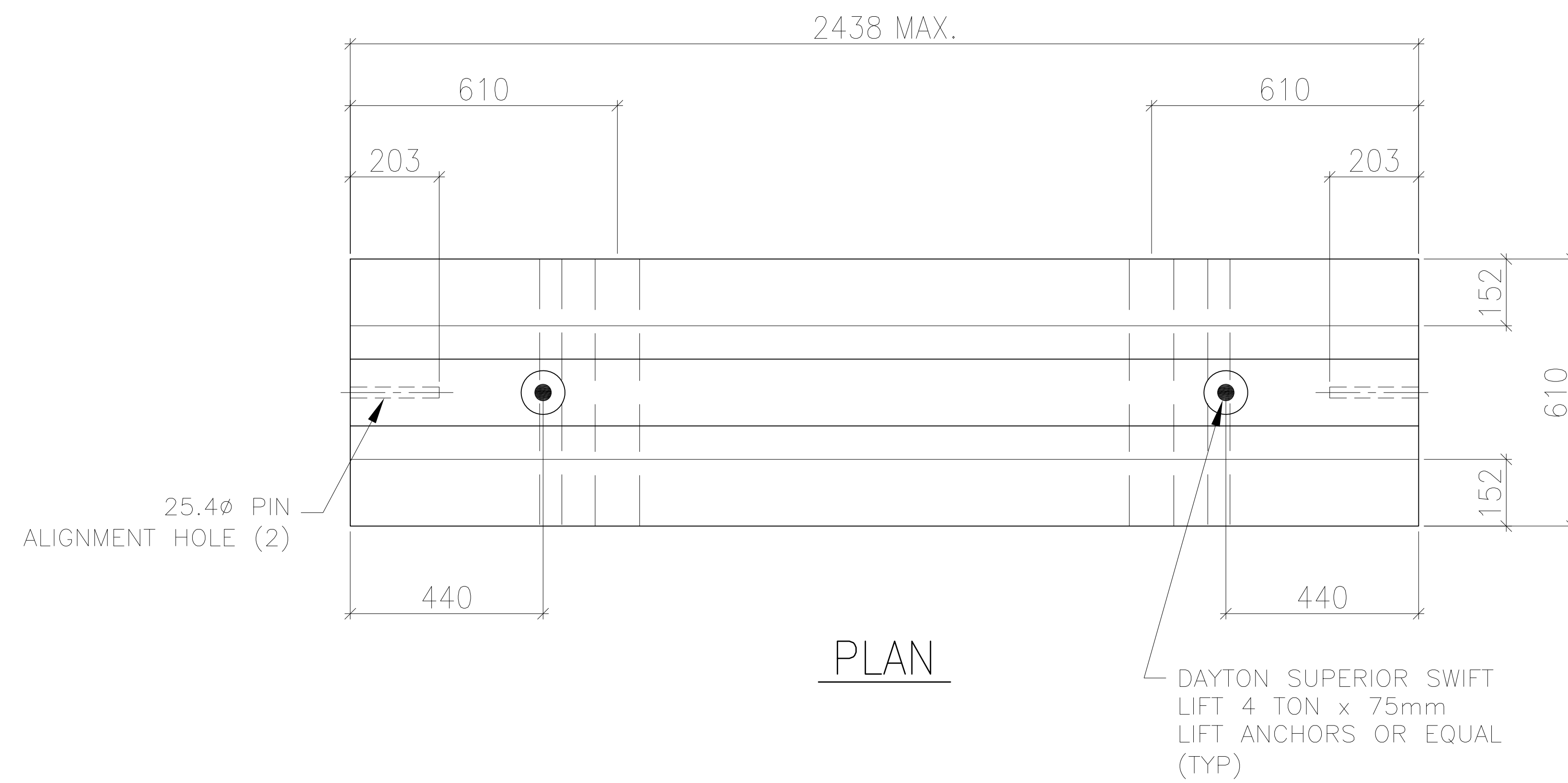
CONCRETE

1. CONCRETE MIX DESIGNS SHALL CONFORM TO REQUIREMENTS SET FORTH IN CAN/CSA A23.1 EXPOSURE CLASS C1 WITH THE FOLLOWING CRITERIA:

- CONCRETE STRENGTH = 20 MPa AT TIME OF STRIPPING
- DESIGN CONCRETE STRENGTH OF 32 MPa AT 28 DAYS OR TIME OF SHIPPING
- 5% TO 8% AIR ENTRAINMENT
- MAXIMUM W/C RATIO = 0.45
- GALLANT AGGREGATE SHALL BE USED WITH A NOMINAL AGGREGATE SIZE OF 13mm

2. CONCRETE CURING SHALL BE IN CONFORMANCE WITH CAN/CSA A23.1 (LATEST EDITION).

3. SHAW CONCRETE BATCH No. SHALL BE 406.



REV. NO.	REVISION	DATE

SHAW PRECAST CONCRETE
1111 Highway #2, 120 Ave 21st, Box 212, Regina, SK S4S 0A2, CANADA
 PHONE: 1-800-885-2201 FAX: 1-800-885-1275
 WWW.SHAWPRECAST.COM EMAIL: SHAW@SHAWPRECAST.COM

DRAWING No. **STD-JB150TOPG**

PROJECT TITLE: **STANDARD PRODUCTS**

PRODUCT CODE: **SPBARRIER2**

DRAWING TITLE: **STANDARD BARRIER
 152mm TOP (6")
 2438 x 750 BARRIER OR
 1219 x 750 BARRIER**

GEOMETRY

DATE: MAY 2012	DESIGNED: STAFF
DRAWN: STAFF	CHECKED: STAFF