

**NOTES**

**GENERAL**

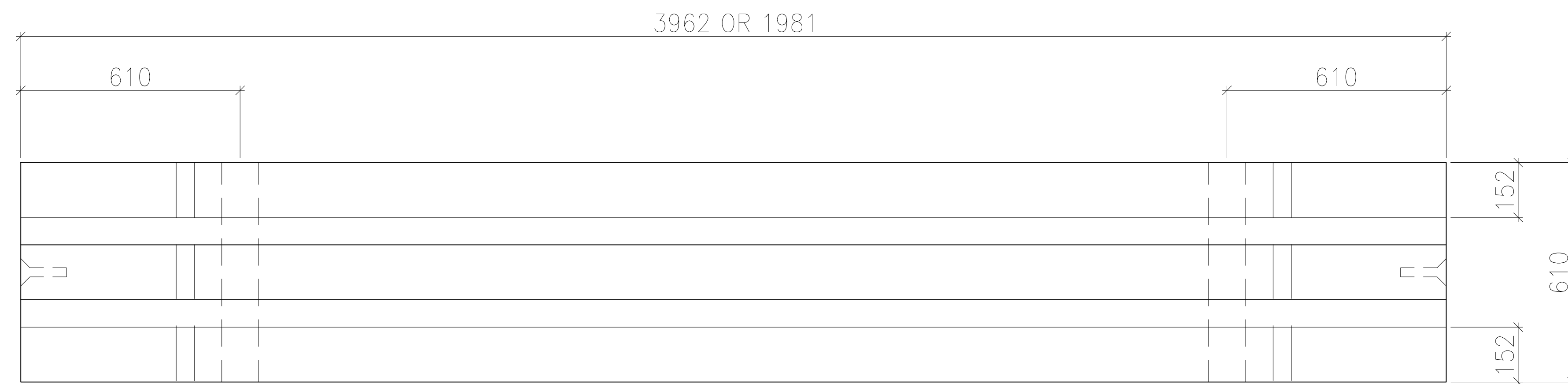
- FOR HANDLING, STORAGE, TRANSPORTATION AND ERECTION PROCEDURES PLEASE REFER TO "DAYTON/RICHMOND GUIDELINES FOR HANDLING CONCRETE PIPE AND UTILITY PRODUCTS".
- APPROXIMATE WEIGHT 3962mm = 1800 kg.  
1981mm = 900 kg.
- TOLERANCE FOR STRUCTURAL ELEMENTS, MATERIALS & CONSTRUCTION CONFORM TO CAN/CSA A23.4 "PRECAST CONCRETE" CLAUSE 10.

**REINFORCEMENT**

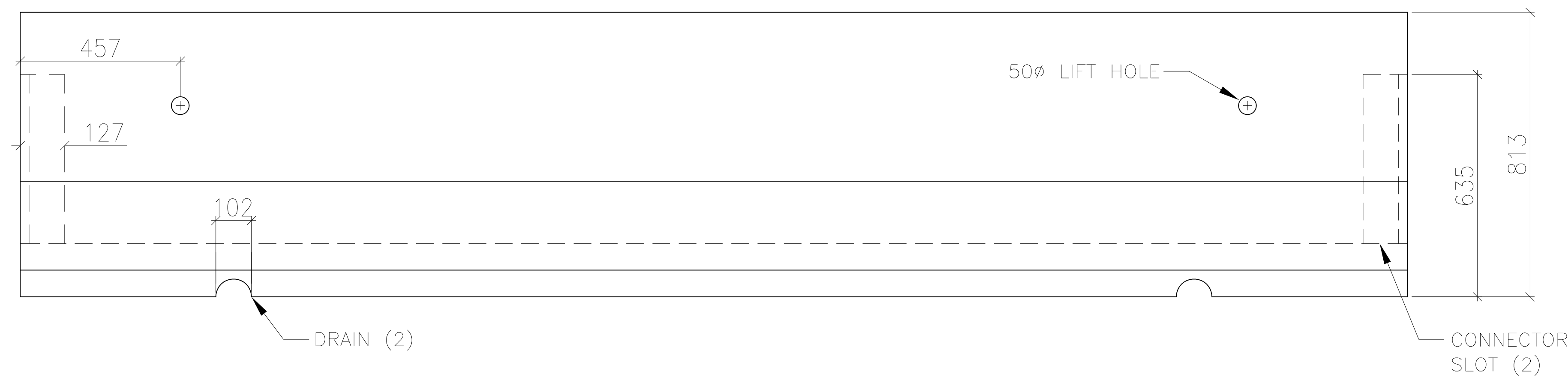
- ALL REINFORCING STEEL SHALL BE GRADE 400W AND CONFORM TO CAN/CSA G30.18 (LATEST EDITION).
- ALL WELDED WIRE MESH SHALL HAVE A  $F_y = 485$  MPA AND CONFORM TO ASTM A496 AND A497.
- ALL REINFORCING SHALL BE DETAILED, FABRICATED, PLACED AND SUPPORTED IN ACCORDANCE WITH CAN/CSA A23.4 (LATEST EDITION).

**CONCRETE**

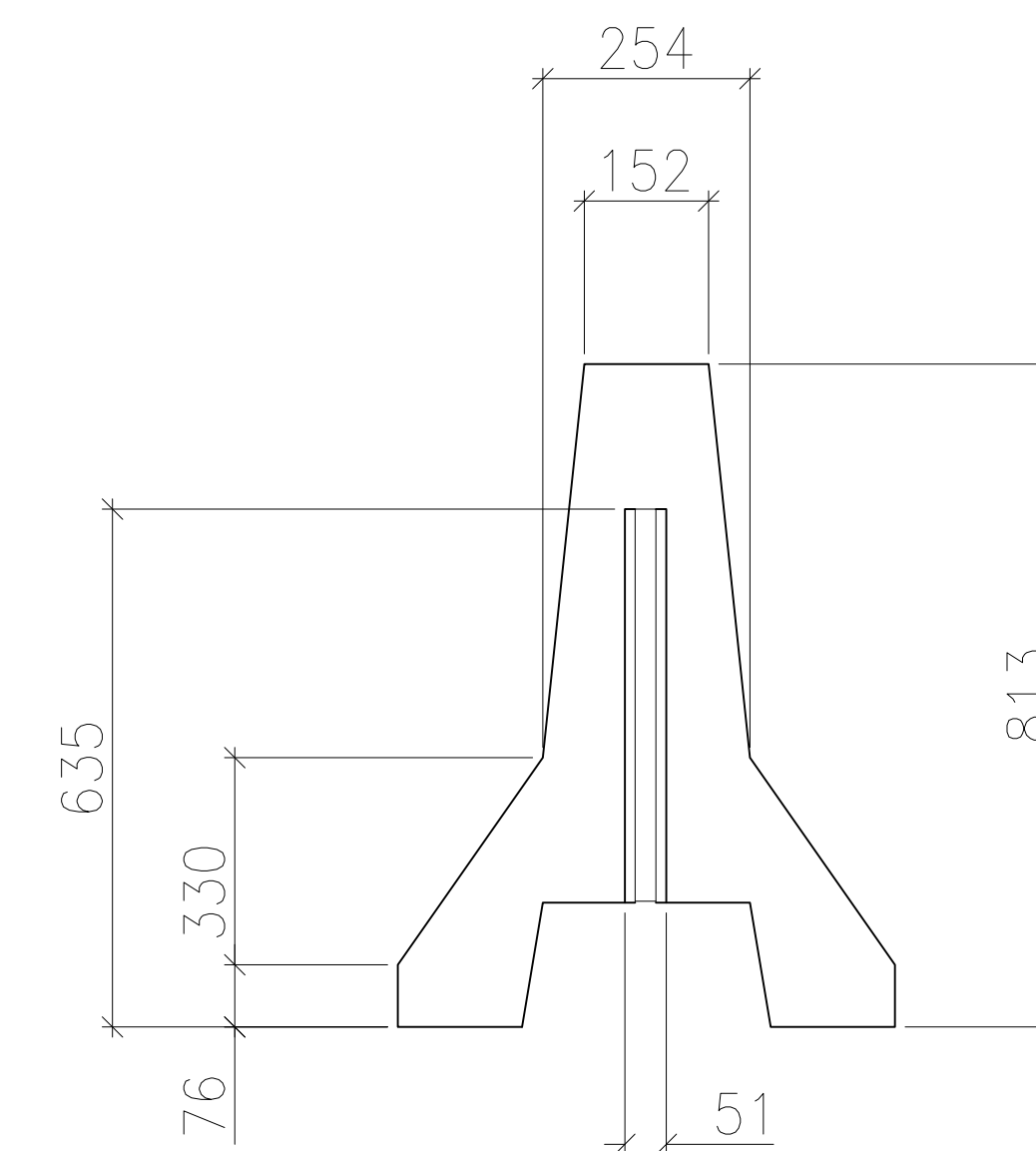
- CONCRETE MIX DESIGNS SHALL CONFORM TO REQUIREMENTS SET FORTH IN CAN/CSA A23.1 EXPOSURE CLASS C1 WITH THE FOLLOWING CRITERIA:
  - CONCRETE STRENGTH = 20 MPa AT TIME OF STRIPPING
  - DESIGN CONCRETE STRENGTH OF 32 MPa AT 28 DAYS OR TIME OF SHIPPING
  - 5% TO 8% AIR ENTRAINMENT
  - MAXIMUM W/C RATIO = 0.45
  - GALLANT AGGREGATE SHALL BE USED WITH A NOMINAL AGGREGATE SIZE OF 13mm
- CONCRETE CURING SHALL BE IN CONFORMANCE WITH CAN/CSA A23.1 (LATEST EDITION).
- SHAW CONCRETE BATCH No. SHALL BE 406.



PLAN



FRONT



SIDE

REV. NO.	REVISION	DATE

**SHAW**  
PRECAST/CAST-IN-PLACE

1101 HURON ST.  
P.O. BOX 2100  
MILFORD, OH 45130

Phone: 513.883.2001  
Fax: 513.883.1222  
Shipping: 1.888.737.7429  
www.shawprecast.com  
sales@shawprecast.com

SP  
SGS

DRAWING No. **STD-JB3.9LONGG**

PROJECT TITLE:  
**STANDARD PRODUCTS**

PRODUCT CODE:  
**SPBARRIER7**

DRAWING TITLE:  
**STANDARD BARRIER  
152mm TOP (6")  
3962 x 750 BARRIER OR  
1981 x 750 BARRIER**

GEOMETRY

DATE MAY 2012	DESIGNED STAFF
DRAWN STAFF	CHECKED STAFF