

NOTES

GENERAL

1. APPROXIMATE WEIGHT OF 2438mm BARRIER:
= 850 kgs.

REINFORCEMENT

1. ALL REINFORCING STEEL SHALL BE GRADE 400W AND CONFORM TO CAN/CSA A23.4 (LATEST EDITION).

2. ALL REINFORCING SHALL BE DETAILED, FABRICATED, PLACED AND SUPPORTED IN ACCORDANCE WITH CAN/CSA G30.18 AND G30.15 (LATEST EDITION).

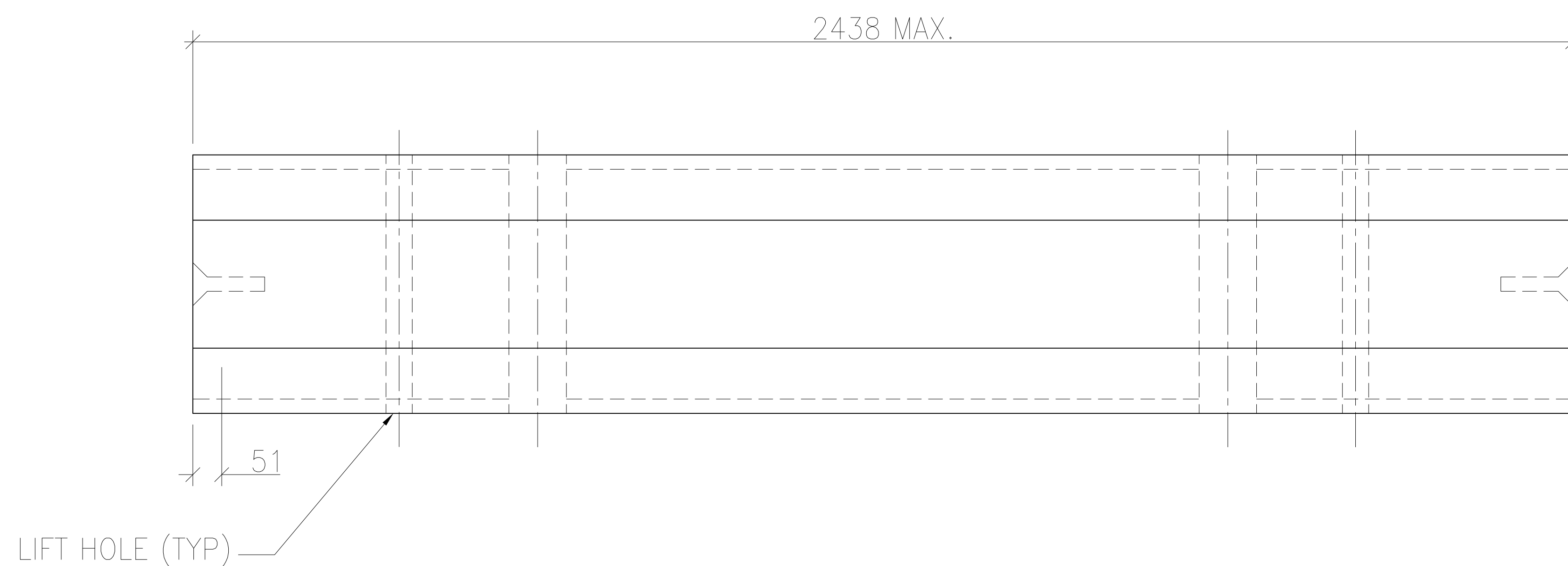
3. CONCRETE COVER OVER STEEL REINFORCEMENT SHALL BE 25mm.

CONCRETE

1. CONCRETE MIX DESIGNS SHALL CONFORM TO REQUIREMENTS SET FORTH BY CAN/CSA A23.1 EXPOSURE CLASS C1 WITH THE FOLLOWING CRITERIA:
 - MINIMUM HANDLING STRENGTH = 20MPa
 - DESIGN/SHIPPING STRENGTH = 35 MPa
 - 5% TO 8% AIR ENTRAINMENT
 - GALLANT AGGREGATE SHALL BE USED WITH A NOMINAL AGGREGATE SIZE OF 13mm

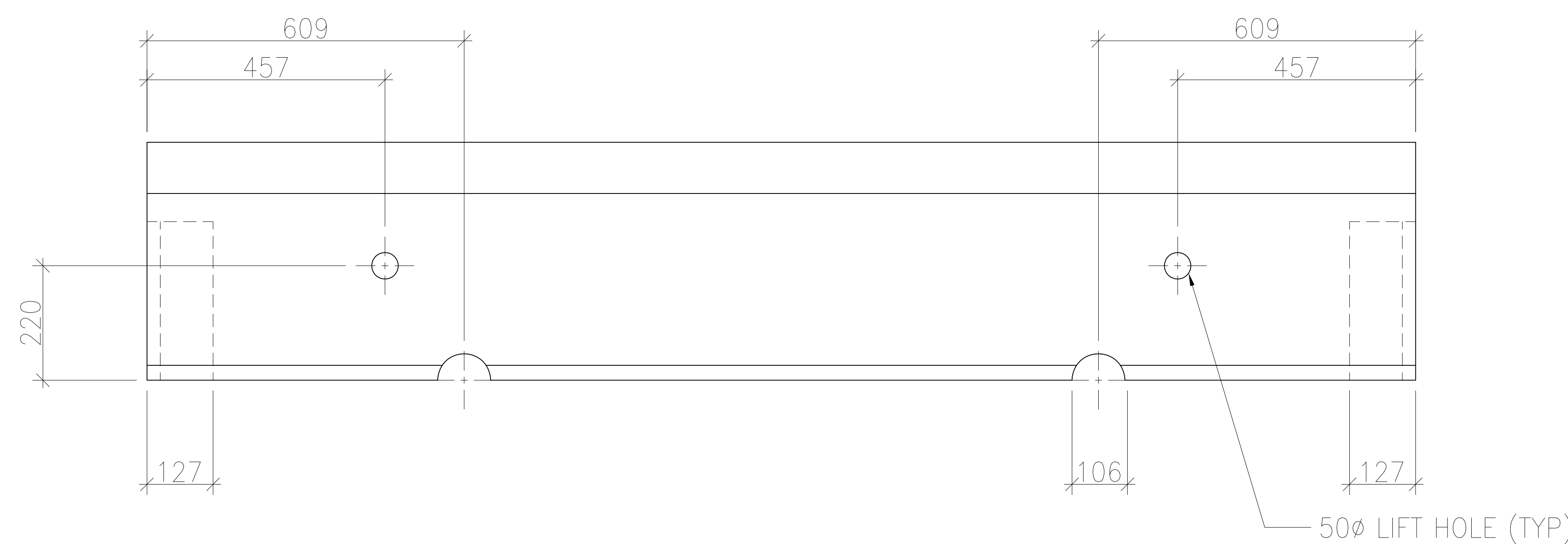
2. CONCRETE CURING SHALL BE IN CONFORMANCE WITH CAN/CSA A23.1 (LATEST EDITION).

3. SHAW CONCRETE BATCH No. SHALL BE 406.

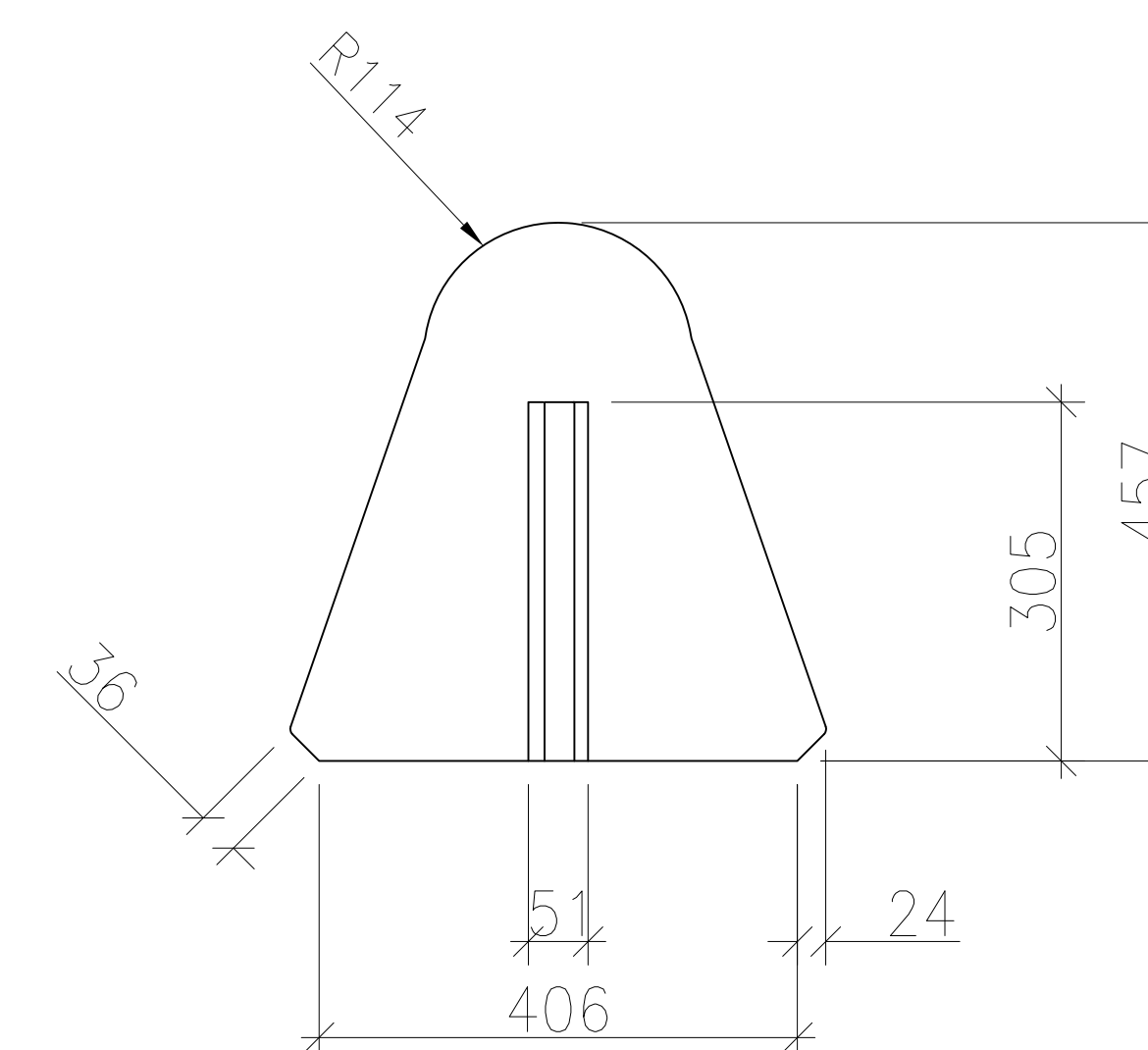


LIFT HOLE (TYP)

PLAN



FRONT



SIDE

REV NO.	REVISION	DATE

DRAWING No. **STD-JB457G**

PROJECT TITLE: **STANDARD PRODUCTS**

PRODUCT CODE: **SPBARRIER1**

DRAWING TITLE: **STANDARD BARRIER 457mm HIGH**

GEOMETRY

DATE: MAY 2012 DESIGNED: STAFF

DRAWN: STAFF CHECKED: STAFF