

NEWSUPDATE

PROVIDING THE RIGHT SOLUTIONS



The SNOUT® Oil-Water-Debris Separator

Affordable Stormwater Quality Improvement Systems

over
40,000
in service

also in this issue:

- Flared Pipe Ends
- Drainage Trenches
- Tri-Lock Erosion Control
- Parking Curbs
- Precast Buildings
- Transformer Pads



Hooded outlet cover for sump style stormwater catch basin or structure

Anti-siphon device prevents contaminants from being drawn downstream

Removable watertight access port

Stainless steel hardware used throughout

Strong, light-weight plastic composite construction is very easy to install

Attaches to structure over any type of pipe

...continued / p2

US Patent 6126817 / Canadian Patent 2285146





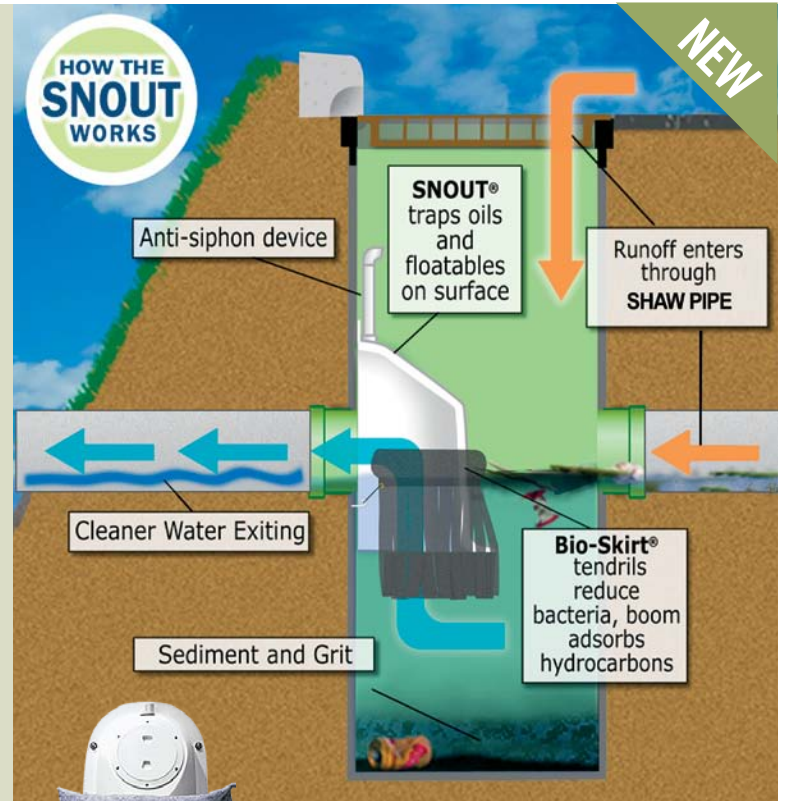
THE SNOOT®

The BMP SNOOT® stormwater quality improvement system, with accessories like the Bio-Skirt® and TrashScreen™, provide low-cost structural solutions to help with compliance to stormwater quality regulations like EPA NPDES Phase II.

The SNOOT offers reductions in pollutants such as floatables, trash, free oils, and sediment. The Bio-Skirt reduces bacteria and more effectively capture hydrocarbons and the TrashScreen helps with full trash capture.

Municipalities, state and federal agencies, the military, transportation and maritime industries, retailers and restaurants, as well as residential and commercial land developers have installed more than 40,000 SNOOT oil-water-debris separators since 1999.

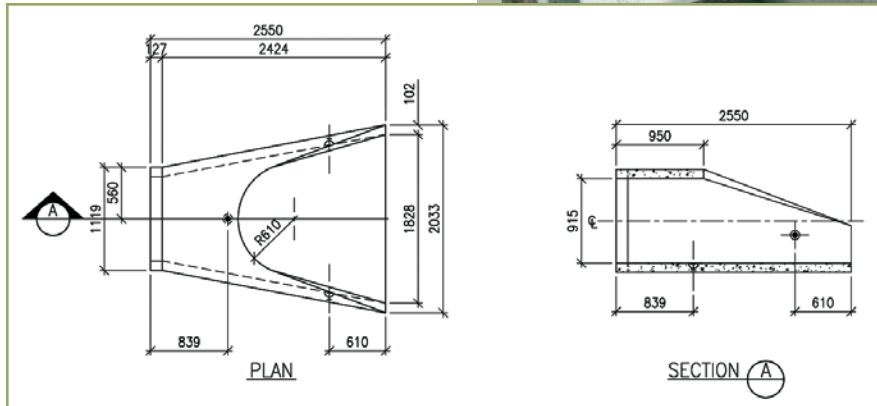
Visit ShawPrecastSolutions.com for more information.



Bio-Skirt

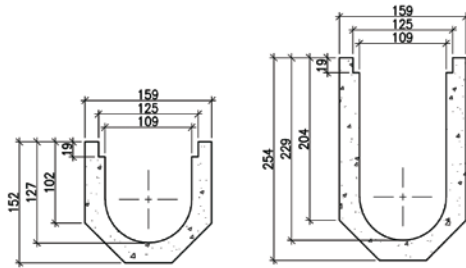
FLARED PIPE ENDS

Available for concrete pipe diameters 300mm rcp minimum – 900mm rcp maximum, flared concrete pipe ends increase the carrying capacity of the culvert by reducing the entrance loss. The sloping wingwalls improve the appearance of the road and offer no hindrance to mowing machines.



DRAINAGE TRENCHES

Available in 2 different sizes, 150mm high and 250mm high. Suitable for all applications. A complement to any precast paving project, an ideal solution for drawing surface water from parking lots, driveways and patios. Galvanized grating is included.



TRI-LOCK EROSION CONTROL



Permeability. Tri-Lock allows effective hydraulic pressure relief due to the close proximity and interval of its voids. The voids are created by the configuration of the blocks and not by holes made through the blocks. This unique method assures the blocks are not weakened by penetrations that may cause stress cracking.

Flexibility. This system is the most flexible of any revetment system. The flexibility is achieved by providing adequate tapers at all the interlocking junctions. Tri-Lock will flex to approximately one meter radius in all directions and remain flexibility. It is recommended that the maximum design radius be 1.2 metres to allow for soil settlement.

Revegetation. The voids within the system provide sufficient space for topsoil to support lush vegetation when necessary or desired. Channels are created between the system's voids allowing root systems to migrate between cells to thoroughly interlock and avoid being exposed to traffic or other damaging events. The relatively smooth surface of the system allows for grass cutting with conventional grass cutting equipment if required. The resultant benefit of hard armour performance with improved natural habitat and reduced urban heat island effects are major benefits of Tri-Lock.



Access. The completed Tri-Lock revetment will support both pedestrian and vehicular traffic, provided the sub-surface has been designed to support that traffic. Should vegetation not be desired, for instance, in the case of an access or boat ramp, the voids may then be filled with 20mm rock chip or gravel.

Penetrations. Because Tri-Lock modules are connected to three adjacent modules, the removal of one or more modules is possible without causing the system to be disconnected. The remaining peripheral modules will always be safely connected to at least two others. This feature allows safe and easy access for the installation of drainage pipes, piles and the like. To neaten the penetrations it is usual to construct a cement grout collar around the opening taking care not to fix the collar to the penetrating pile or pipe so that it maintains flexibility and allows free settlement around the feature.

Cost. The Tri-Lock System is very competitive with any alternative system, yet provides benefits not achievable with other methods. The Tri-Lock System needs minimum maintenance and has proven longevity in worldwide installations over the past 25 years.

PRECAST PARKING CURBS

Shaw Precast Solutions is a quality manufacturer of precast concrete parking curbs to retail and industrial customers, building contractors and developers. Parking curbs are designed to protect buildings and other parked vehicles from being struck by vehicular traffic.

Shaw Precast's high strength 60 MPa parking curbs are cost-effective, durable, weather resistant, long lasting and heavily reinforced. Ideal for parking lots, driveways, parking garages and parks. Available in 4', 6' and 8' lengths.



PRECAST BUILDINGS

Shaw Precast Solutions manufactures and engineers a variety of architectural and structural precast concrete buildings, designed around your specific project requirements. Precast Buildings offer an economic, flexible and reliable solution for utility, pumps, electrical and mechanical, or any other project requirement. Constructed from precast concrete, with a variety of available architectural finishes.



TRANSFORMER PADS

Shaw Precast Solutions provides Precast Transformer Pads in any size to support a variety of electrical equipment types. Ask your sales representative about customized options. CAD Drawings and PDFs are available to download at ShawPrecastSolutions.com



PO Box 2130 , Lantz, Nova Scotia, B2S 3G4
Toll Free 1-888-777-SHAW (7429)
Tel: (902) 883-2201 / Fax: (902) 883-1273
email: sales@shawprecastsolutions.com
web: shawprecastsolutions.com