

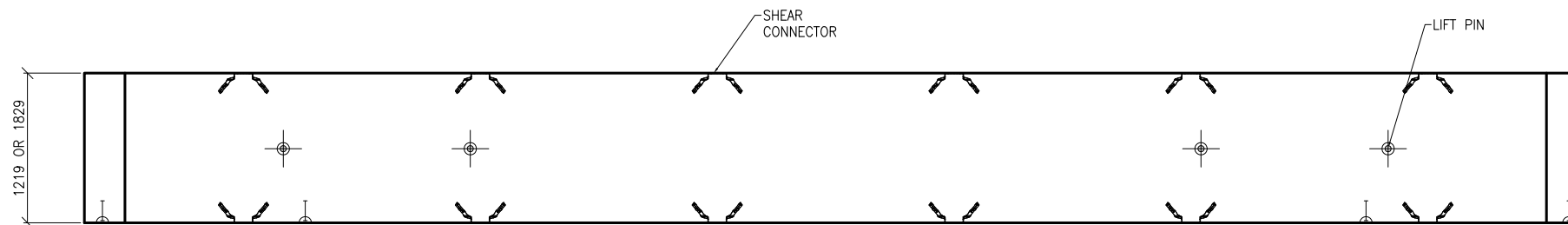
SHAWSPAN WEIGHTS (kgs)

LAY LENGTH = 1219mm

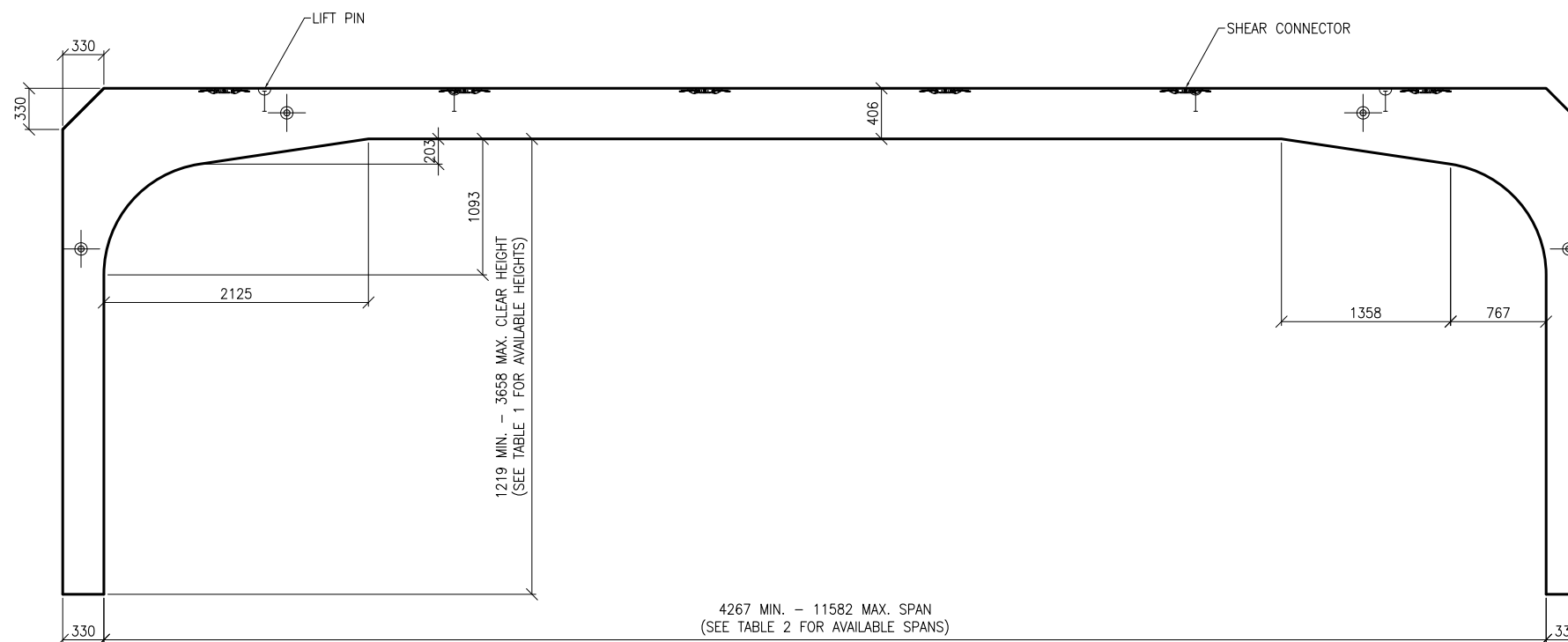
AVAILABLE RISE (mm)	AVAILABLE SPAN (mm)												
	4270	4880	5490	6100	6710	7320	7930	8540	9150	9760	10370	10980	11590
1220	11,000	12,000	13,000	13,500	14,000	15,000	15,500	16,500	17,000	18,000	18,500	19,500	20,000
1830	12,500	13,000	14,000	14,500	15,500	16,000	17,000	17,500	18,500	19,000	19,500	20,500	21,000
2440	13,500	14,500	15,000	15,500	16,500	17,500	18,000	18,500	19,500	20,000	21,000	21,500	22,500
3050	14,500	15,500	16,000	17,000	17,500	18,500	19,000	20,000	20,500	21,500	22,000	23,000	23,500
3660	16,000	16,500	17,500	18,000	19,000	20,000	20,500	21,000	22,000	22,500	23,500	24,000	25,000

LAY LENGTH = 1829mm

AVAILABLE RISE (mm)	AVAILABLE SPAN (mm)												
	4270	4880	5490	6100	6710	7320	7930	8540	9150	9760	10370	10980	11590
1220	16,500	17,500	18,500	20,000	21,000	22,000	23,000	24,500	25,500	26,500	27,500	29,000	30,000
1830	18,500	19,500	20,500	21,500	23,000	24,000	25,000	26,000	27,000	28,500	29,500	30,500	31,500
2440	20,000	21,500	22,500	23,500	24,500	25,500	27,000	28,000	29,000	30,000	31,500	32,500	33,500
3050	22,000	23,000	24,000	25,500	26,500	27,500	28,500	29,500	31,000	32,000	33,000	34,000	35,500
3660	24,000	25,000	26,000	27,000	28,000	29,500	30,500	31,500	32,500	34,000	35,000	36,000	37,000



PLAN



ELEVATION

NOTES

- GENERAL**
- FOR HANDLING, STORAGE, TRANSPORTATION AND ERECTION PROCEDURES PLEASE REFER TO "SHAWSPAN INSTALLATION GUIDE" AND "DAYTON/RICHMOND GUIDELINES FOR HANDLING CONCRETE PIPE AND UTILITY PRODUCTS".
 - WEIGHTS: STANDARD UNIT = VARIES
 - TOLERANCE FOR STRUCTURAL ELEMENTS, MATERIALS & CONSTRUCTION CONFORM TO CAN/CSA A23.4 "PRECAST CONCRETE" CLAUSE 10.
 - JOINT MATERIAL TO BE SUPPLIED BY SHAW PIPE. CONTRACTOR IS RESPONSIBLE FOR INSTALLATION OF JOINT MATERIALS.

REV. NO.	REVISION	DATE



DRAWING No. SS14-38STD

PROJECT TITLE: TYPICAL SHAWSPAN

DRAWING TITLE: SHAWSPAN

GEOMETRY

DATE	DESIGNED	CHECKED	DRAWN
14 MARCH 2013	R.BROOKMAN	R.BROOKMAN	C.MACKINNON

SHEET 1 OF 3